

Fig. 923 Straight Through Sight Flow Indicator with Integral Spout - Carbon Steel

This two sided flow indicator features an integral spout that produces a jetting action for turbulent flow thereby improving the viewing of clear liquids.

FEATURES & BENEFITS

- The large viewing area allows the flow, colour and condition of the liquid to be observed, enabling monitoring of product quality and consistency.
- This indicator is suitable for both vertical and horizontal installation. The inclusion of a spout allows for use as a drip indicator to show valve leaks, distillation or similar conditions.
- Available with screwed and flanged end connections, see table below for further detail.

For product application please refer to pages 30 and 31.

TEMPERATURE RATINGS

Materials			Temperature
Body	Covers & Bolting	Gaskets	
Carbon Steel	Mild Steel	NRG	-9.5°C to 250°C
	Mild Steel	PTFE	-9.5°C to 200°C

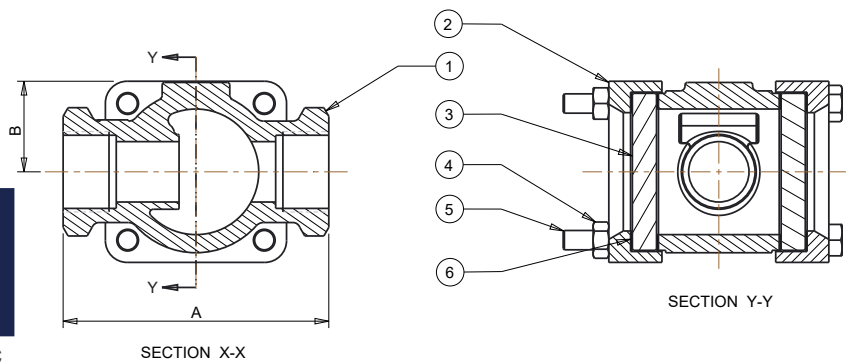
*At ambient temperature. Maximum pressure may be reduced by flange rating or by elevated temperatures. Please request further information if required.

DIMENSIONS

SCREWED					FLANGED				
Nominal Bore Size	Length A (mm)	Max Height from Centre B (mm)	Max Width C (mm)	Weight (kg)	Nominal Bore Size	Length A (mm)	Max Height from Centre B (mm)	Max Width C (mm)	Weight (kg)
15	90	30	80	0.9	25	140	38	94	3.5
20	90	30	80	0.9	40	180	45	120	6.5
25	110	38	94	1.7	50	220	56	135	10.5
40	130	45	120	3.1	80	260	86	186	20.5
50	170	56	135	5.8	100	310	94	224	35.5
					150	358	120	306	76



Fig.923 Carbon Steel



Every effort has been made to ensure that the information contained in this publication is accurate at the time of publishing. Rhodes assumes no responsibility or liability for typographical errors or omissions or for any misinterpretation of the information within the publication and reserves the right to change without notice.

MATERIALS OF CONSTRUCTION

ITEM NO.	DESCRIPTION	BODY MATERIAL	MATERIAL	QTY
1	Body	Carbon Steel	ASTM A216 WCB	1
2	Cover	Mild Steel	BS EN 10025 S355 J2G3	2
3	Glass Disc	Toughened Soda Lime	BS3463	2
		Toughened Borosilicate	DIN 7080	
4	Gasket	Nickel Reinforced Graphite		4
		PTFE		
5	Bolts	Mild Steel Zinc Plated		4
6	Nuts	Mild Steel Zinc Plated		4

MAXIMUM RATINGS

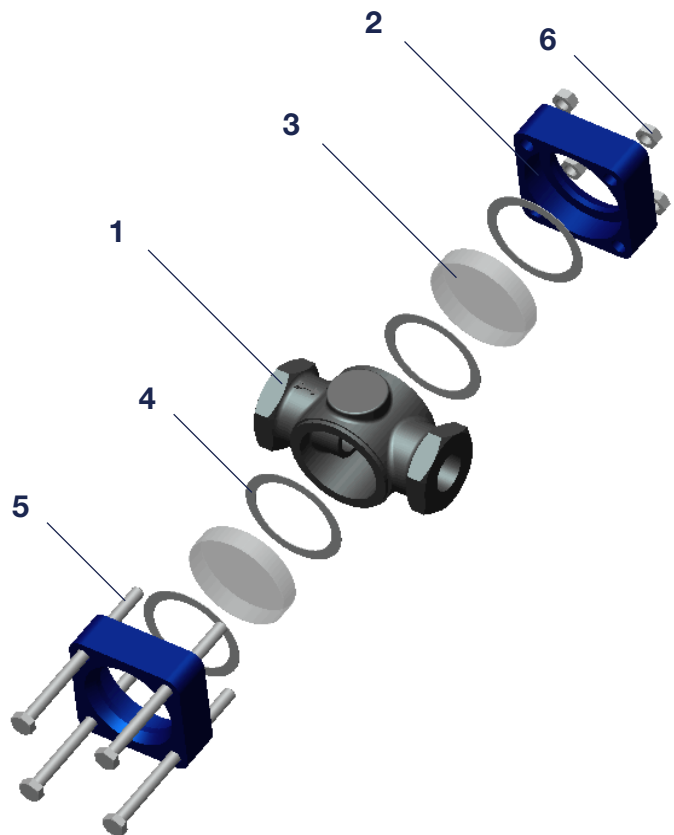
Full Vacuum to 25 Bar

Dependent on connection type

END CONNECTIONS

SCREWED	FLANGED
<ul style="list-style-type: none"> BSP Taper 'Rc' BS EN 10226 BSP Parallel 'Rp' BS EN 10226 BSP Parallel 'G' ISO 228 NPT Buttweld ANSI B16.25 Socket Weld ANSI B16.11 	<ul style="list-style-type: none"> ANSI 150 RF ANSI 150 FF ANSI 300 RF PN16 BS EN 1092 PN25 BS EN 1092 Table E BS10 Table F BS10 Table H BS10

*Other end connections available on request.



APPROVALS



FM00311 ISO 9001



ISO 14001 Reg No. EMS 78657

Every effort has been made to ensure that the information contained in this publication is accurate at the time of publishing. Rhodes assumes no responsibility or liability for typographical errors or omissions or for any misinterpretation of the information within the publication and reserves the right to change without notice.