



accessories for glass level gauges

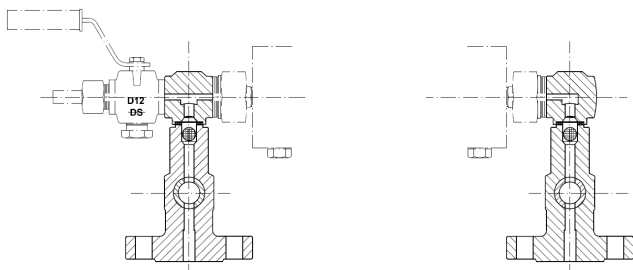


ACCESSORIES FOR GLASS LEVEL GAUGES

SAFETY BALL

The DIESESE level gauges can be equipped with a safety ball lower and/or upper (in stainless steel 316) positioned inside the valves, which stops the fluid flow in case glass breakage occurs. The breakage is anyway improbable if the operations are carried out in the proper way.

Shut-off cocks type DS GR 18



Code:
 LC [Safety ball for lower shut-off cock]
 UC [Safety ball for upper shut-off cock]

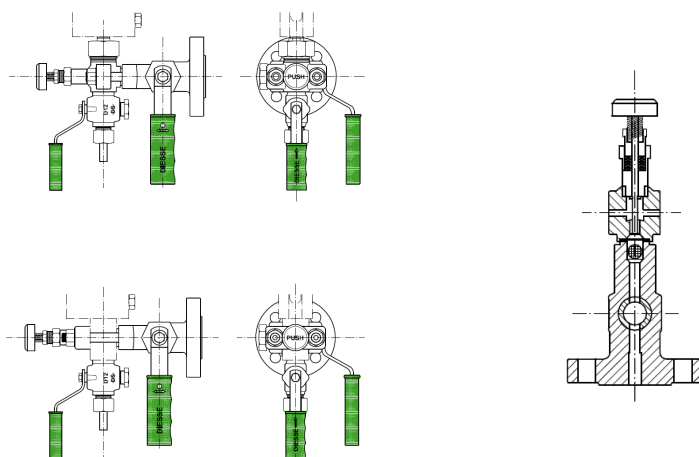
Shut-off valves type DS SHV

The shut-off valves type DS SHV are always equipped with safety balls.

PUSHER for safety ball

Shut-off cocks type DS GR 18

To re-position the safety balls and enable the normal flow of the fluid, on request it's available a pusher in stainless steel.

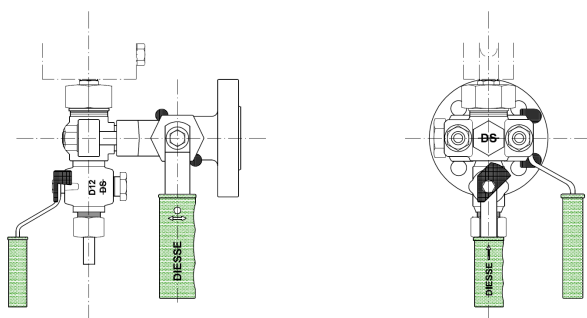


Code:
 LPH [Pusher for lower shut-off cock]
 UPH [Pusher for upper shut-off cock]

Shut-off valves type DS SHV

The pusher is not necessary for shut-off valves type DS SHV because, when closing, the extension of the stem provides by itself for the repositioning of the safety ball.

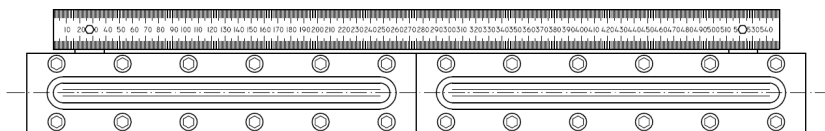
COCKS HANDLES LOCK (on request also lockable)



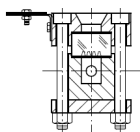
Code:
 SMHD [Cocks handles lock (all)]
 LU-SMHD [Shut-off handles lock]
 D-SMHD [Drain handle lock]
 V-SMHD [Vent handle lock]

CALIBRATED SCALE

The calibrated scale (millimeters) is in stainless steel, the values are engraved and black coloured. The standard indication correspond to the centre-to-centre distance of the level gauge. On request other materials and graduations can be supplied.

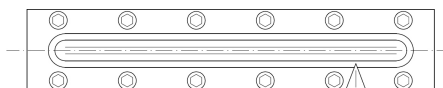


Code: VSG

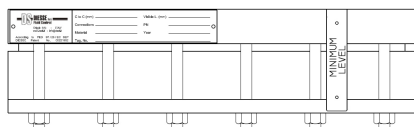


MINIMUM LEVEL ARROW

To mark the minimum level of the fluid which must be maintained inside the tank, a minimum level arrow in stainless steel can be fixed on the level gauge. On request to enable its regulation along the full visible length it is possible to fix the arrow on a small rail.

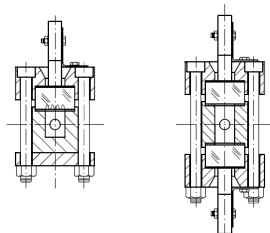
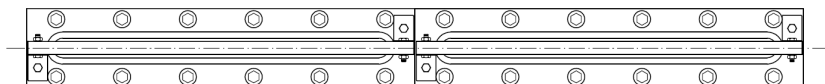


Code: MLA



NON-FROSTING EXTENSION

On request an acrylic transparent resin slab can be supplied to be positioned on the level gauge glass (both for reflex and transparent one) to avoid the frost formation on the external surface of the glass to facilitate the fluid level reading. The non-frosting extension is recommended when the fluid reach a temperature $< 0^{\circ}\text{C}$.

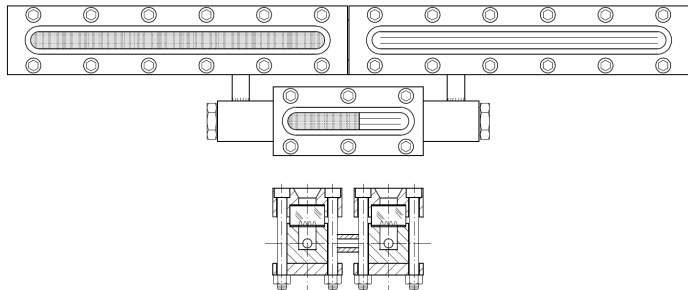


Code: NFE

ACCESSORIES FOR GLASS LEVEL GAUGES

CONTINUOUS READING

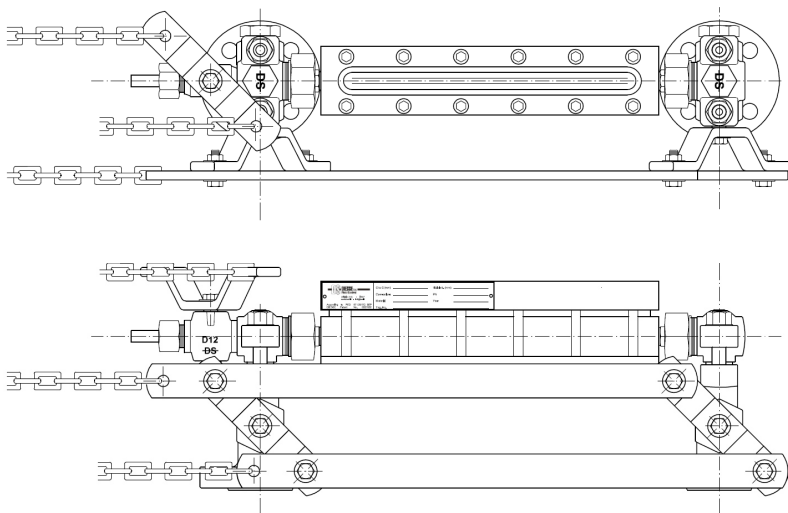
The execution of a multiple level gauge involves a discontinuity in reading due to short dark area as a result of the two elements joint. If a continuous reading of the fluid level is necessary, a special type can be supplied.



Code: CR

REMOTE CONTROL

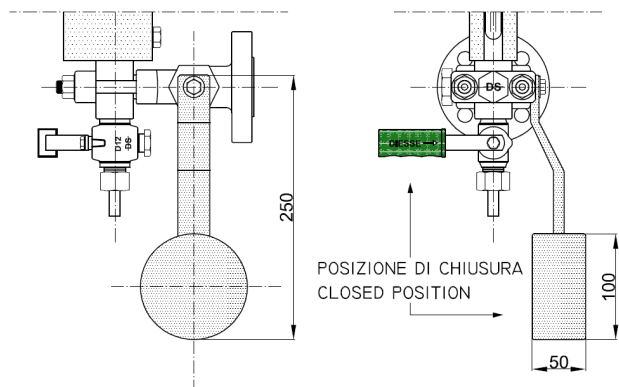
In case of level gauge installed in a high position which does not enable an easy shut-off cocks opening/closure, the handles can be equipped with a remote control device. Cable or chains are not supplied by the manufacturer.



Code: ELC

WEIGHT CLOSING for handle (SELF-CLOSING DEVICE)

This device is supplied to ensure that the shut-off cocks remain closed even in case of the operator absence.



Code:
LFC [Weight closing for lower handle]
UFC [Weight closing for upper handle]

ACCESSORIES FOR GLASS LEVEL GAUGES

ILLUMINATION LAMP (For transparent level gauges only)

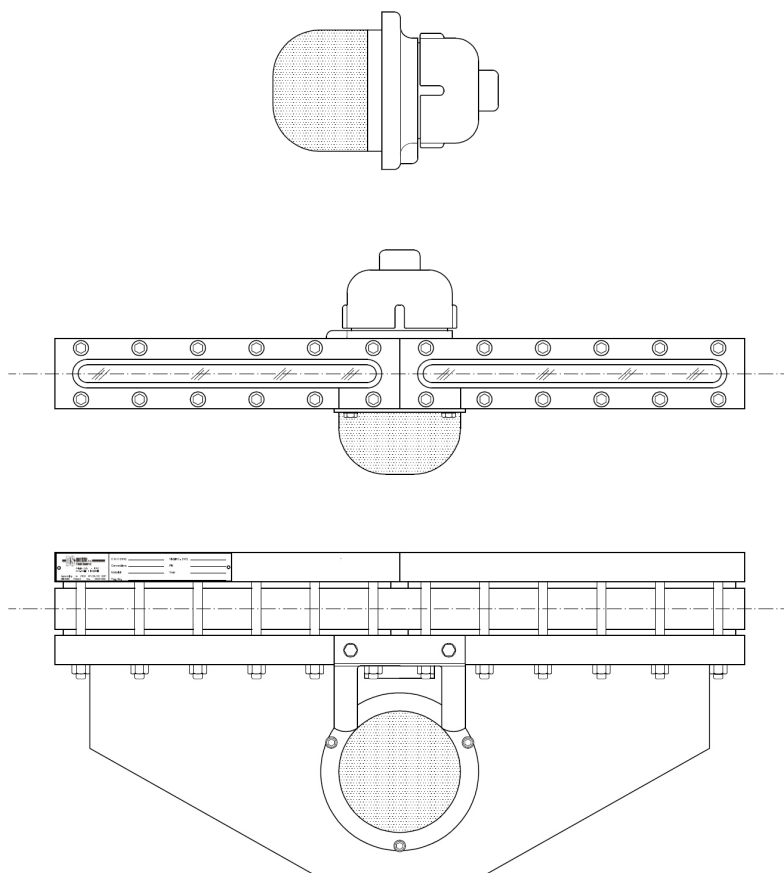
The visibility of the transparent level gauges can be improved by the installation of an illumination lamp positioned on the back side of the instrument. The lamp light is directed at the level gauge by a borosilicate or plexiglas diffuser.

Materials:

Body and cover:	aluminium with epoxy paint Option in stainless steel AISI 316
Transparent globe:	thermorestant and impact resistant glass
Support for glass level gauge:	carbon steel galvanized Option in stainless steel AISI 316
Lamp:	fluorescent bulb 11 W E27 for supply voltage 230 VAC, 50/60 Hz Option with LED lamp 230V AC 7W E27 or 24V DC 5W E27

Technical data:

Supply voltage	12-24 V AC/DC	125 V AC	230 V AC
Rated current	90-130 mA	15 mA	20 mA
Working temperature	- 20°C + 60°C	- 20°C + 60°C	- 20°C + 60°C
Frequency	--	50 / 60 Hz	50 / 60 Hz
Average power consumption	2 W	1,6 W	4,5 W
Lamp power	6J	6J	6J
Service	Continuous	Continuous	Continuous
Cable entry	3/4" NPT-F	3/4" NPT-F	3/4" NPT-F
ATEX approval	INERIS 01 ATEX 0068X	INERIS 01 ATEX 0068X	INERIS 01 ATEX 0068X



Code: EVA50